



Turning Point Analytics utilizes a time-tested, real-world strategy that optimizes the client's entry and exit points and adds alpha. TPA defines each stock as Trend or Range to identify actionable inflection points.

"In the short run, the market is a voting machine, but in the long run, it is a weighing machine." - Benjamin Graham

S&P 1500+ DAILY SNAPSHOT – COMMENTS & CHARTS

Tuesday, November 02, 2021

Today's TPA Trend-Range Report included below. TPA Trend-Range Strategy explained below.
Links for Explanations of Technical terms at the bottom of the report

SELL

- SNX rose 3% yesterday and is back to resistance. TPA recommended selling on 5/21/21 and closed out that rec with a P&L of 18% on 9/28/21. SNX fell below its 18-month uptrend line in early September and then broke down below 3-month support at the 110 level in late September (chart 2). The weekly chart shows that the next level of long-term support is far below Monday's close; near 75. SNX is also expensive on a Price to Sales basis. Price to Sales is now 0.21, whereas its 10-year average P/S is just 0.12 (chart and table below). TPA's target is down 20% from Monday's close.

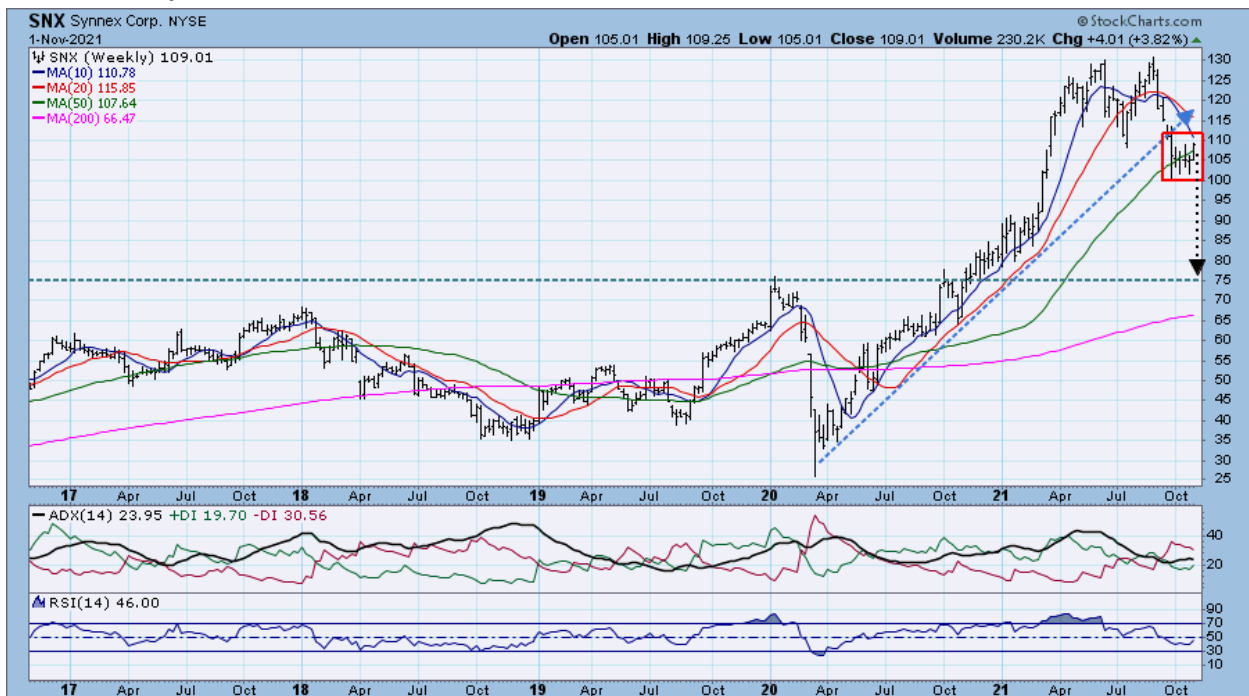
SNX Synnex Corp. 109.0100 Stop = 115.5506 Target = 87.2080



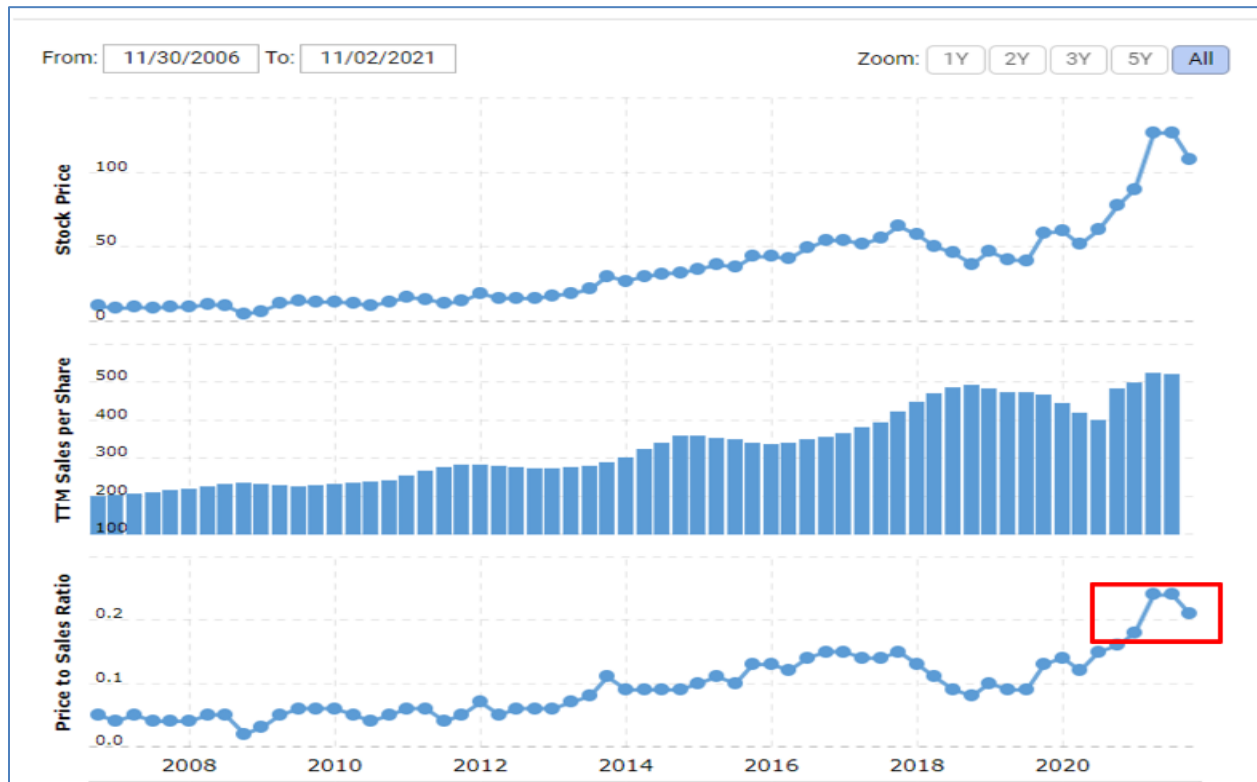
MMS - zoom



MMS - weekly



MMS Price to Sales



10 year average		0.12
SYNNEX P/S Ratio Historical Data		
Date	Stock Price	Price to Sales Ratio
11/1/2021	109.01	0.21
8/31/2021	126.83	0.24
5/31/2021	126.14	0.24
2/28/2021	88.69	0.18
11/30/2020	77.53	0.16
8/31/2020	61.49	0.15
5/31/2020	51.58	0.12
2/29/2020	60.47	0.14
11/30/2019	59.23	0.13
8/31/2019	40.29	0.09
5/31/2019	41.51	0.09
2/28/2019	46.81	0.10
11/30/2018	38.36	0.08
8/31/2018	45.86	0.09
5/31/2018	50.35	0.11
2/28/2018	58.08	0.13
11/30/2017	63.81	0.15
8/31/2017	55.91	0.14
5/31/2017	51.90	0.14
2/28/2017	54.41	0.15
11/30/2016	54.30	0.15
8/31/2016	49.19	0.14
5/31/2016	42.13	0.12
2/29/2016	43.38	0.13
11/30/2015	43.39	0.13
8/31/2015	36.37	0.10
5/31/2015	37.90	0.11
2/28/2015	34.90	0.10
11/30/2014	32.65	0.09
8/31/2014	31.80	0.09
5/31/2014	30.15	0.09
2/28/2014	27.13	0.09
11/30/2013	30.17	0.11
8/31/2013	21.67	0.08
5/31/2013	18.49	0.07
2/28/2013	17.39	0.06
11/30/2012	15.06	0.06
8/31/2012	15.75	0.06
5/31/2012	15.21	0.05
2/29/2012	18.80	0.07
11/30/2011	13.38	0.05

- MMS fell below its 7-month uptrend line in June. MMS has now established a pattern of lower highs and lower lows for the past 8 months=downtrend. The 7% rally since early October puts MMS right at downtrend resistance (zoom chart). Chart 3 shows that the 50DMA recently crossed below the 200DMA after a long steady downtrend has formed. This same pattern was in place in 202 before MMS fell 38% at the start of Covid-19. TPA does not expect the same magnitude decline, but the similarity in patterns is a clear warning at this juncture.

MMS Maximus Inc 86.4900 Stop = 91.2470 Target = 69.1920



MMS - zoom



MMS 50DMA < 200DMA



TPA TREND-RANGE STRATEGY (see explanation below)

TPA TREND-RANGE REPORT (*New and improved!*)

SYMBOL	DESCRIPTION	INDUSTRY	SECTOR	(\$million) MKT CAP	LAST	CONDITION TREND/RANGE	SHORT TERM ALERT	POSSIBLE NEXT MOVE	OVERBOUGHT OVERSOLD	RANGE? ALERT
O	Realty Income	Real Estate Operations	Services	27,592	70.86	DOWNTREND	TURN UP?	-1.93%	0	
MGLN	Magellan Health Inc	Healthcare Facilities	Healthcare	2,500	95.18	DOWNTREND	TURN UP?	-0.53%	1	
PZZA	Papa John's Intl	Restaurants	Services	4,598	125.76	DOWNTREND	TURN UP?	0.26%	0	
DGX	Quest Diagnostics	Healthcare Facilities	Healthcare	17,998	147.31	DOWNTREND	TURN UP?	0.96%	0	
DHR	Danaher Corp	Scientific & Technical Instr.	Technology	221,290	309.68	DOWNTREND	TURN UP?	1.54%	0	
JNJ	Johnson & Johnson	Biotechnology & Drugs	Healthcare	429,166	163.02	DOWNTREND	TURN UP?	1.58%	0	
GPS	Gap Inc	Retail (Apparel)	Services	8,895	23.65	DOWNTREND	TURN UP?	2.03%	0	
AMGN	Amgen Inc	Biotechnology & Drugs	Healthcare	119,130	209.79	DOWNTREND	TURN UP?	2.04%	0	
AKAM	Akamai Technologies	Software & Programming	Technology	17,161	105.39	DOWNTREND	TURN UP?	2.90%	0	
SFM	Sprouts Farmers Mkts Inc	Retail (Grocery)	Services	2,545	22.29	DOWNTREND	TURN UP?	3.05%	0	
ILMN	Illumina Inc	Scientific & Technical Instr.	Technology	61,145	416.8	DOWNTREND	TURN UP?	3.49%	0	
NWE	NorthWestern Corporation	Electric Utilities	Utilities	2,992	58.03	DOWNTREND	TURN UP?	3.53%	0	
SNX	Synnex Corp	Computer Hardware	Technology	10,466	109.01	DOWNTREND	TURN UP?	3.97%	0	
CAH	Cardinal Health Inc	Biotechnology & Drugs	Healthcare	13,796	48.62	DOWNTREND	TURN UP?	4.03%	0	
A	Agilent Technologies Inc	Scientific & Technical Instr.	Technology	47,546	157.06	DOWNTREND	TURN UP?	4.78%	0	
FB	Meta Platforms Inc	Computer Services	Technology	917,925	329.98	DOWNTREND	TURN UP?	5.88%	0	
NUS	NU Skin Enterprises'A'	Personal & Household Prods.	Consumer/Non-Cyclical	2,045	40.79	DOWNTREND	TURN UP?	7.48%	0	
SHAK	Shake Shack Inc	Restaurants	Services	3,129	74.41	DOWNTREND	TURN UP?	7.67%	0	
GKOS	Glaukos Corp	Medical Equipment & Supplies	Healthcare	2,160	46.39	DOWNTREND	TURN UP?	7.93%	0	
BBBY	Bed Bath & Beyond	Retail (Specialty)	Services	1,544	15.28	DOWNTREND	TURN UP?	33.90%	-1	
VLO	Valero Energy	Oil & Gas Operations	Energy	31,897	78.02	UPTREND	TURN DOWN?	-8.43%	1	
CF	CF Industries Hldgs Inc	Chemical Manufacturing	Basic Materials	12,388	57.59	UPTREND	TURN DOWN?	-7.33%	1	
WMB	Williams Companies	Oil & Gas Operations	Energy	34,675	28.54	UPTREND	TURN DOWN?	-7.15%	0	
INGR	Ingredion Inc	Food Processing	Consumer/Non-Cyclical	6,407	95.62	UPTREND	TURN DOWN?	-4.65%	0	
NOV	NOV Inc	Oil Well Services & Equipment	Energy	5,618	14.38	UPTREND	TURN DOWN?	-4.38%	0	
BCPC	Balchem Corp	Biotechnology & Drugs	Healthcare	4,922	152	UPTREND	TURN DOWN?	-4.15%	0	
AON	Aon Plc / Ireland	Insurance (Miscellaneous)	Financial	67,605	306.83	UPTREND	TURN DOWN?	-3.29%	0	
AM	Antero Midstream Corp	Natural Gas Utilities	Utilities	5,114	10.71	UPTREND	TURN DOWN?	-2.33%	0	
IFF	Intl Flavors/Fragr	Food Processing	Consumer/Non-Cyclical	36,672	144.08	UPTREND	TURN DOWN?	-0.23%	0	
SYNA	Synaptics Inc	Computer Hardware	Technology	8,174	209.05	RANGE	TOP	-22.15%	3	!!
KNSL	Kinsale Cap Grp Inc	Insurance (Prop. & Casualty)	Financial	4,422	193.8	RANGE	TOP	-21.78%	3	
BEN	Franklin Res Inc	Investment Services	Financial	17,675	35.15	RANGE	TOP	-20.20%	3	
DECK	Deckers Outdoor Corp	Footwear	Consumer Cyclical	11,377	411.27	RANGE	TOP	-19.40%	0	!!
DXCM	DexCom Inc	Medical Equipment & Supplies	Healthcare	60,796	627.27	RANGE	TOP	-19.22%	2	!!
FORM	Formfactor Inc	Semiconductors	Technology	3,215	41.39	RANGE	TOP	-18.77%	0	!!
ARWR	Arrowhead Pharma Inc	Biotechnology & Drugs	Healthcare	7,401	70.99	RANGE	TOP	-18.48%	0	!!
PLMR	Palomar Holdings Inc	Insurance (Prop. & Casualty)	Financial	2,293	90.36	RANGE	TOP	-17.60%	0	
STX	Seagate Technology Holdings PL	Computer Storage Devices	Technology	20,460	91.9	RANGE	TOP	-17.16%	0	

SYMBOL	DESCRIPTION	INDUSTRY	SECTOR	(\$million)		CONDITION	SHORT TERM	POSSIBLE	OVERBOUGHT	RANGE?
				MKT CAP	LAST	TREND/RANGE	ALERT	NEXT MOVE	OVERSOLD	ALERT
VC	Visteon Corp	Auto & Truck Parts	Consumer Cyclical	3,208	114.58	RANGE	TOP	-16.78%	2	!!
NVT	nVent Electric PLC W/I	Electronic Instr. & Controls	Technology	6,050	35.96	RANGE	TOP	-15.74%	1	!!
COTY	Coty Inc	Personal & Household Prods.	Consumer/Non-Cyclical	7,108	8.71	RANGE	TOP	-15.73%	0	
IVI	II-VI Inc	Semiconductors	Technology	6,717	63.23	RANGE	TOP	-14.85%	0	
RL	Ralph Lauren Corp.	Retail (Apparel)	Services	9,538	129.75	RANGE	TOP	-14.64%	1	
NEO	NeoGenomics Inc	Healthcare Facilities	Healthcare	5,780	47.06	RANGE	TOP	-13.45%	0	
IRBT	iRobot Corporation	Appliance & Tool	Consumer Cyclical	2,483	88.53	RANGE	TOP	-13.42%	1	
URI	United Rentals Inc	Rental & Leasing	Services	27,751	383.33	RANGE	TOP	-13.37%	1	
MNRO	Monro Inc	Business Services	Services	2,097	62.58	RANGE	TOP	-13.36%	0	
SHOO	Madden (Steven) Ltd	Footwear	Consumer Cyclical	3,777	46.09	RANGE	TOP	-13.23%	1	!!
AHT	Ashford Hospitality Tr	Hotels & Motels	Services	480	14.75	RANGE	TOP	-13.02%	1	
LGIH	LGI Homes Inc	Construction Services	Capital Goods	3,807	154.65	RANGE	TOP	-12.88%	0	!!
EXP	Eagle Materials	Construction - Raw Materials	Capital Goods	6,134	150.8	RANGE	TOP	-12.80%	0	!!
CPRI	Capri Holdings Ltd	Apparel/Accessories	Consumer Cyclical	8,446	55.56	RANGE	TOP	-12.60%	0	
VSAT	Viasat Inc	Communications Services	Services	4,491	61.25	RANGE	TOP	-12.44%	2	
CCMP	CMC Materials Inc	Personal & Household Prods.	Consumer/Non-Cyclical	3,922	134.22	RANGE	TOP	-12.39%	0	!!
FOXF	Fox Factory Hldng Corp	Auto & Truck Parts	Consumer Cyclical	6,872	163.22	RANGE	TOP	-12.31%	0	
URBN	Urban Outfitters	Retail (Apparel)	Services	3,214	32.67	RANGE	TOP	-12.27%	0	
CENT	Central Garden & Pet	Food Processing	Consumer/Non-Cyclical	2,735	53.42	RANGE	TOP	-12.09%	1	
CENTA	Central Garden & Pet Co 'A'	Food Processing	Consumer/Non-Cyclical	2,735	47.78	RANGE	TOP	-11.49%	1	
DORM	Dorman Products Inc	Auto & Truck Parts	Consumer Cyclical	3,374	106.57	RANGE	TOP	-11.36%	0	
HOG	Harley-Davidson	Recreational Products	Consumer Cyclical	6,123	39.8	RANGE	TOP	-11.36%	0	
AMAT	Applied Materials	Semiconductors	Technology	125,968	139.51	RANGE	TOP	-10.97%	0	
LFUS	Littelfuse Inc	Electronic Instr. & Controls	Technology	7,383	299.75	RANGE	TOP	-10.78%	0	
ALRM	Alarm.com Hldgs Inc	Software & Programming	Technology	4,266	85.48	RANGE	TOP	-10.68%	0	
KWR	Quaker Chemical Corporation	Chemical Manufacturing	Basic Materials	4,530	253.37	RANGE	TOP	-10.64%	0	!!
TECH	Bio-Techne Corp	Biotechnology & Drugs	Healthcare	20,602	525.06	RANGE	TOP	-10.59%	0	
FBHS	Fortune Brands Home & Security	Constr. - Supplies & Fixtures	Capital Goods	13,728	101.14	RANGE	TOP	-10.53%	0	!!
NATI	Natl Instruments	Electronic Instr. & Controls	Technology	5,813	43.71	RANGE	TOP	-10.30%	0	
MAC	Macerich Co	Real Estate Operations	Services	4,022	18.88	RANGE	TOP	-10.28%	0	
JHG	Janus Henderson Grp PLC	Investment Services	Financial	8,103	47.5	RANGE	TOP	-10.08%	1	!!
JNPR	Juniper Networks	Communications Equipment	Technology	9,846	30.28	RANGE	TOP	-10.07%	0	
CVS	CVS Health Corp	Retail (Drugs)	Services	119,620	90.65	RANGE	TOP	-9.97%	1	
NDSN	Nordson Corp	Chemical Manufacturing	Basic Materials	15,037	258.74	RANGE	TOP	-9.92%	0	
FTV	Fortive Corp	Scientific & Technical Instr.	Technology	27,467	76.6	RANGE	TOP	-9.77%	0	
FFIV	F5 Networks	Software & Programming	Technology	13,047	215.12	RANGE	TOP	-9.73%	0	
CTLT	Catalent Inc	Biotechnology & Drugs	Healthcare	23,762	139.07	RANGE	TOP	-9.56%	0	!!
VMI	Valmont Indus	Constr. - Supplies & Fixtures	Capital Goods	5,250	247.38	RANGE	TOP	-9.50%	0	
IDXX	Idexx Laboratories	Fish/Livestock	Consumer/Non-Cyclical	56,701	666.48	RANGE	TOP	-9.44%	0	

SYMBOL	DESCRIPTION	INDUSTRY	SECTOR	(\$million)		CONDITION	SHORT TERM	POSSIBLE	OVERBOUGHT	RANGE?
				MKT CAP	LAST	TREND/RANGE	ALERT	NEXT MOVE	OVERSOLD	ALERT
VRSN	Verisign Inc	Software & Programming	Technology	24,778	223.07	RANGE	TOP	-9.32%	0	!!
ACC	American Campus Communities	Real Estate Operations	Services	7,547	54.25	RANGE	TOP	-9.31%	0	
IAA	IAA Inc	Retail (Specialty)	Services	8,200	60.83	RANGE	TOP	-9.19%	1	
TNL	Travel + Leisure Co	Hotels & Motels	Services	4,878	56.49	RANGE	TOP	-8.87%	0	
IVZ	Invesco Ltd	Investment Services	Financial	12,236	26.53	RANGE	TOP	-8.74%	0	
HQY	HealthEquity Inc	Regional Banks	Financial	5,694	68.18	RANGE	TOP	-8.68%	0	
GIII	G-III Apparel Grp Ltd	Apparel/Accessories	Consumer Cyclical	1,437	29.59	RANGE	TOP	-8.65%	0	
OXM	Oxford Indus	Retail (Apparel)	Services	1,633	96.68	RANGE	TOP	-8.63%	0	
AME	Ametek, Inc	Scientific & Technical Instr.	Technology	30,993	134.05	RANGE	TOP	-8.53%	0	!!
WHR	Whirlpool Corp	Appliance & Tool	Consumer Cyclical	13,447	214.46	RANGE	TOP	-8.53%	0	
OZK	Bank OZK	Regional Banks	Financial	5,969	46.56	RANGE	TOP	-8.53%	1	
ROST	Ross Stores	Retail (Apparel)	Services	40,515	114.01	RANGE	TOP	-8.53%	0	!!
MKSI	MKS Instruments	Scientific & Technical Instr.	Technology	8,476	152.86	RANGE	TOP	-8.42%	0	
MCHP	Microchip Tech	Semiconductors	Technology	42,147	76.9	RANGE	TOP	-8.41%	0	!!
NDAQ	NASDAQ Inc	Investment Services	Financial	35,096	209.9	RANGE	TOP	-8.40%	0	
PBI	Pitney Bowes Inc	Air Courier	Transportation	1,302	7.4	RANGE	TOP	-8.38%	0	
FHI	Federated Hermes Inc	Investment Services	Financial	3,342	34.51	RANGE	TOP	-8.37%	1	
XRT	SPDR S&P Retail	0	0	0	96.39	RANGE	TOP	-8.37%	0	
POWI	Power Integrations Inc	Semiconductors	Technology	6,291	104.28	RANGE	TOP	-8.33%	0	!!
UBSI	United Bankshs	Regional Banks	Financial	4,969	38.46	RANGE	TOP	-8.27%	1	
KBH	KB Home	Construction Services	Capital Goods	3,639	41.6	RANGE	TOP	-8.25%	0	
LEG	Leggett & Platt	Furniture & Fixtures	Consumer Cyclical	6,412	48.1	RANGE	TOP	-8.15%	0	
ACIW	ACI Worldwide Inc	Consumer Financial Services	Financial	3,775	32.13	RANGE	TOP	-7.94%	0	
CHD	Church & Dwight	Personal & Household Prods.	Consumer/Non-Cyclical	21,397	87.64	RANGE	TOP	-7.74%	1	
CIEN	Ciena Corp	Communications Equipment	Technology	8,561	55.26	RANGE	TOP	-7.73%	0	!!
AVT	Avnet, Inc	Electronic Instr. & Controls	Technology	3,883	39.13	RANGE	TOP	-7.59%	0	
OC	Owens Corning	Constr. - Supplies & Fixtures	Capital Goods	9,464	94.18	RANGE	TOP	-7.55%	0	
AVY	Avery Dennison Corp	Containers & Packaging	Basic Materials	18,171	219.24	RANGE	TOP	-7.40%	0	!!
DOC	Physicians Realty Trust	Real Estate Operations	Services	4,181	19.23	RANGE	TOP	-7.38%	0	!!
GBCI	Glacier Bancorp	Regional Banks	Financial	6,297	56.95	RANGE	TOP	-7.22%	0	
J	Jacobs Engr Grp	Construction Services	Capital Goods	18,337	140.71	RANGE	TOP	-7.18%	0	
TTEC	TTEC Hlds Inc	Computer Services	Technology	4,560	97.06	RANGE	TOP	-7.16%	0	
EME	Emcor Grp	Construction Services	Capital Goods	6,572	123.13	RANGE	TOP	-7.13%	0	
CATY	Cathay General Bancorp	Regional Banks	Financial	3,407	43.59	RANGE	TOP	-7.11%	0	
HOMB	Home BancShs Inc	Regional Banks	Financial	4,087	24.91	RANGE	TOP	-7.11%	1	
JBT	John Bean Technologies	Misc. Capital Goods	Capital Goods	4,911	154.58	RANGE	TOP	-7.01%	0	
MTZ	MasTec Inc	Construction Services	Capital Goods	6,763	91	RANGE	TOP	-6.97%	0	
VAC	Marriott Vacations WorldWide	Hotels & Motels	Services	6,973	163.27	RANGE	TOP	-6.83%	0	
QRVO	Qorvo Inc	Communications Equipment	Technology	19,124	172.07	RANGE	TOP	-6.78%	0	!!

SYMBOL	DESCRIPTION	INDUSTRY	SECTOR	(\$million)		CONDITION	SHORT TERM	POSSIBLE	OVERBOUGHT	RANGE?
				MKT CAP	LAST	TREND/RANGE	ALERT	NEXT MOVE	OVERSOLD	ALERT
BKH	Black Hills Corp	Electric Utilities	Utilities	4,286	67.51	RANGE	TOP	-6.77%	0	!!
INN	Summit Hotel Properties Inc	Real Estate Operations	Services	1,107	10.38	RANGE	TOP	-6.74%	0	
MS	Morgan Stanley	Investment Services	Financial	189,754	104	RANGE	TOP	-6.59%	0	
LZB	La-Z Boy Inc	Furniture & Fixtures	Consumer Cyclical	1,543	34.82	RANGE	TOP	-6.49%	0	
CVBF	CVB Finl	Regional Banks	Financial	2,812	20.75	RANGE	TOP	-6.46%	0	
TEL	TE Connectivity Ltd	Electronic Instr. & Controls	Technology	49,425	151.13	RANGE	TOP	-6.44%	0	
MU	Micron Tech	Semiconductors	Technology	79,087	70.7	RANGE	TOP	-6.44%	0	
COKE	Coca-Cola Consol Inc	Beverages (Nonalcoholic)	Consumer/Non-Cyclical	3,880	413.93	RANGE	TOP	-6.32%	0	
CMI	Cummins Inc	Misc. Capital Goods	Capital Goods	35,231	245.33	RANGE	TOP	-6.31%	0	
VIAV	Viavi Solutions Inc	Communications Equipment	Technology	3,803	15.88	RANGE	TOP	-6.30%	0	
COO	Cooper Cos	Medical Equipment & Supplies	Healthcare	20,803	421.94	RANGE	TOP	-6.30%	0	
IDA	Idacorp Inc	Electric Utilities	Utilities	5,405	106.99	RANGE	TOP	-6.22%	0	
FHN	First Horizon National Corp	Regional Banks	Financial	9,520	17.33	RANGE	TOP	-6.17%	1	!!
NEOG	Neogen Corp	Biotechnology & Drugs	Healthcare	4,619	42.97	RANGE	TOP	-6.10%	0	
BRC	Brady Corp'A'	Computer Peripherals	Technology	2,768	53.17	RANGE	TOP	-6.07%	0	!!
CBU	Community Bank System	Regional Banks	Financial	3,983	73.87	RANGE	TOP	-6.01%	0	
HST	Host Hotels & Resorts Inc	Real Estate Operations	Services	12,316	17.25	RANGE	TOP	-5.91%	0	
ICUI	ICU Medical	Medical Equipment & Supplies	Healthcare	5,015	236.43	RANGE	TOP	-5.82%	0	
NJR	New Jersey Resources	Natural Gas Utilities	Utilities	3,742	38.8	RANGE	TOP	-5.80%	0	!!
VLY	Valley National Bancorp	Regional Banks	Financial	5,737	14.11	RANGE	TOP	-5.74%	1	
BF.B	Brown-Forman Corp Cl B	Beverages (Alcoholic)	Consumer/Non-Cyclical	33,276	70.94	RANGE	TOP	-5.69%	0	
MCD	McDonald's Corp	Restaurants	Services	187,133	250.58	RANGE	TOP	-5.69%	0	
LRCX	Lam Research	Misc. Capital Goods	Capital Goods	80,644	572.76	RANGE	TOP	-5.45%	0	
CRUS	Cirrus Logic	Semiconductors	Technology	4,766	82.75	RANGE	TOP	-5.16%	0	
WEN	The Wendy's Co	Restaurants	Services	5,080	22.8	RANGE	TOP	-4.61%	0	
LCII	LCI Industries Inc	Mobile Homes & RVs	Capital Goods	3,588	141.97	RANGE	TOP	-4.56%	0	
MMS	Maximus Inc	Business Services	Services	5,317	86.49	RANGE	TOP	-4.43%	0	
OGS	ONE Gas Inc	Natural Gas Utilities	Utilities	3,713	69.4	RANGE	TOP	-4.34%	0	
CASY	Casey's Genl Stores	Retail (Grocery)	Services	7,177	193.45	RANGE	TOP	-4.25%	0	
HRL	Hormel Foods Corp	Fish/Livestock	Consumer/Non-Cyclical	23,303	42.95	RANGE	TOP	-4.17%	0	
MTX	Minerals Technologies Inc	Chemical Manufacturing	Basic Materials	2,444	72.76	RANGE	TOP	-3.96%	0	
CWT	California Water Service Grp	Water Utilities	Utilities	3,230	61.39	RANGE	TOP	-3.88%	0	
RGA	Reinsuran Grp Of America Inc	Insurance (Life)	Financial	8,262	121.51	RANGE	TOP	-3.65%	0	
COHR	Coherent, Inc	Medical Equipment & Supplies	Healthcare	6,298	256.71	RANGE	TOP	-3.54%	0	
SAFM	Sanderson Farms Inc	Food Processing	Consumer/Non-Cyclical	4,276	191.5	RANGE	TOP	-3.04%	0	
LANC	Lancaster Colony Corp	Food Processing	Consumer/Non-Cyclical	4,637	168.43	RANGE	BOTTOM	4.32%	0	!!
ALL	Allstate Corp	Insurance (Prop. & Casualty)	Financial	36,520	123.51	RANGE	BOTTOM	4.96%	0	
C	Citigrp Inc	Regional Banks	Financial	141,085	69.61	RANGE	BOTTOM	4.97%	0	
WLTW	Willis Towers Watson Pub Ltd	Insurance (Miscellaneous)	Financial	29,609	237.62	RANGE	BOTTOM	5.14%	0	

SYMBOL	DESCRIPTION	INDUSTRY	SECTOR	(\$million)		CONDITION	SHORT TERM	POSSIBLE	OVERBOUGHT	RANGE?
				MKT CAP	LAST	TREND/RANGE	ALERT	NEXT MOVE	OVERSOLD	ALERT
PM	Philip Morris Intl Inc	Tobacco	Consumer/Non-Cyclical	145,439	93.42	RANGE	BOTTOM	5.69%	0	
LYB	LyondellBasell Ind N.V.	Chemical Manufacturing	Basic Materials	31,375	94.28	RANGE	BOTTOM	6.36%	0	
MOG.A	Moog Cl'A'	Aerospace & Defense	Capital Goods	2,452	76.16	RANGE	BOTTOM	6.95%	0	
HPP	Hudson Pacific Properties, Inc	Real Estate Operations	Services	3,952	25.92	RANGE	BOTTOM	8.80%	0	
MA	Mastercard Inc	Consumer Financial Services	Financial	328,223	334.05	RANGE	BOTTOM	10.12%	0	
KMPR	Kemper Corp.	Insurance (Prop. & Casualty)	Financial	4,071	63.96	RANGE	BOTTOM	10.33%	0	!!
COF	Cap One Finl	Consumer Financial Services	Financial	68,260	153.01	RANGE	BOTTOM	16.10%	0	
TRIP	TripAdvisor Inc When-Issued	Recreational Activities	Services	4,507	32.8	RANGE	BOTTOM	16.68%	0	
DFS	Discover Finl Svcs	Consumer Financial Services	Financial	33,604	114.66	RANGE	BOTTOM	18.37%	0	!!
THRM	Gentherm Inc	Auto & Truck Parts	Consumer Cyclical	2,569	77.3	RANGE	BOTTOM	20.48%	-1	
TWTR	Twitter Inc	Computer Services	Technology	44,067	55.11	RANGE	BOTTOM	24.97%	-1	!!

TPA TREND-RANGE STRATEGY EXPLAINED

Alerts:

1. Uptrend stocks trading below short term moving averages:

- Possible buy at uptrend support (chart 1)
- Possible sell if medium-term trend break (chart 2)

2. Downtrend stocks trading above short-term moving averages

- Possible sell at downtrend resistance (chart 3)
- Possible buy if medium-term trend break (chart 4)

3. Range stocks (low trend strength) at the top or bottom 10% of their 2 STD DEV Bollinger Band

- Possible buy at bottom of range (chart 5)
- Possible sell at top of range (chart 6)

Medium-term Trend Strength determined by DMI ADX

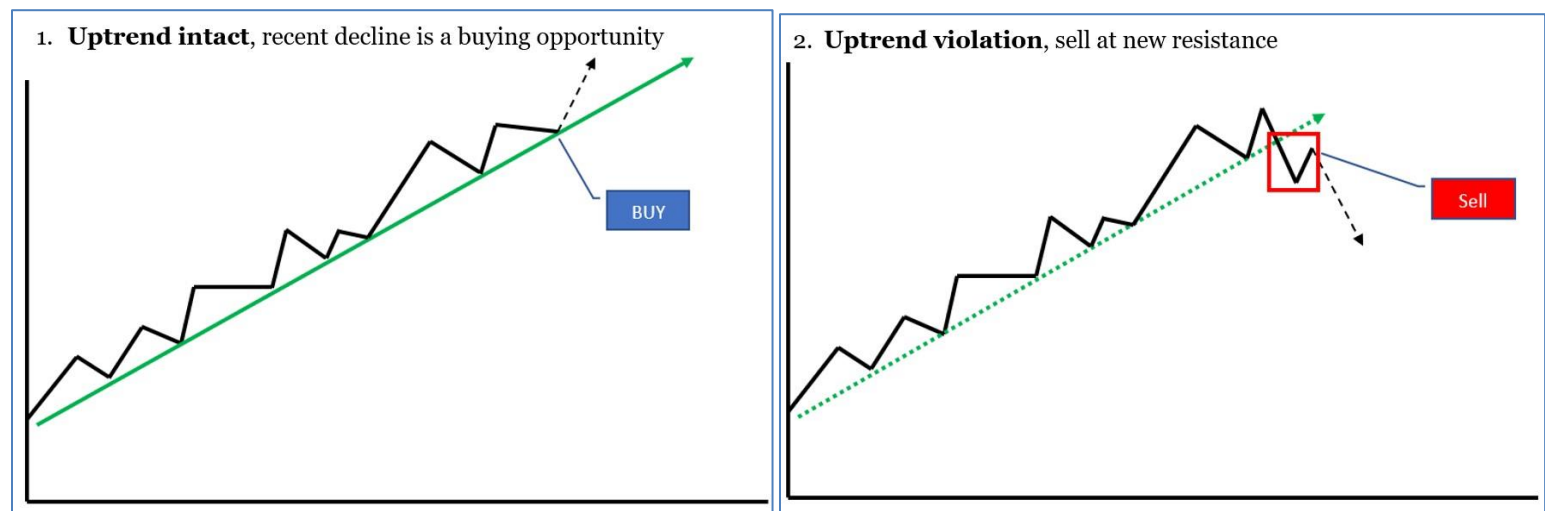
Uptrend – trend strength & DMI+ > DMI-

Downtrend – trend strength & DMI- > DMI+

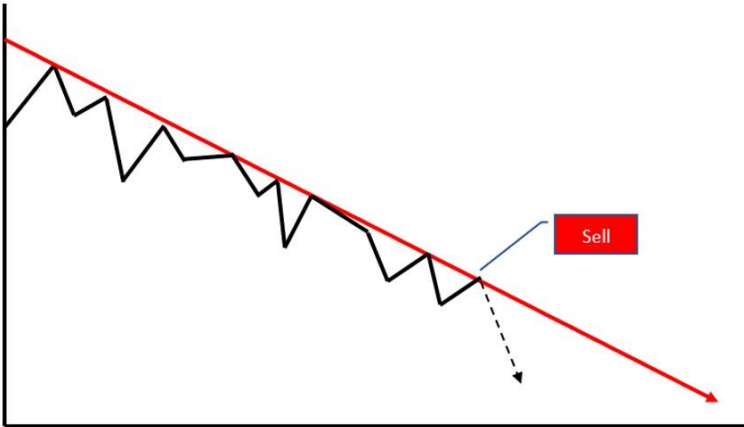
Range – low trend strength

Actionable stocks fit one of the 6 TPA charts at the bottom of this report

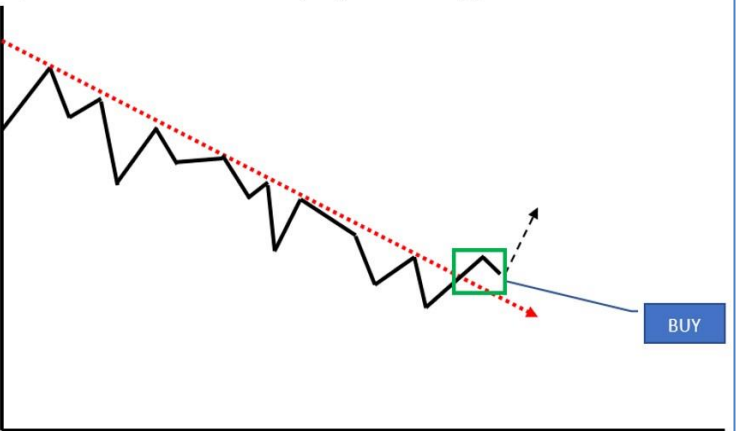
TPA looks first to Trend-Range for actionable ideas. Other variables must also be examined including, but not confined to, TPA's ongoing macro investment themes, relative strength compared to the market, sector, and subsector, overbought or oversold characteristics, other technical patterns that may exist, patterns that involve fundamentals or EPS surprise, longer-term support and resistance levels, and longer-term uptrends and downtrend lines.



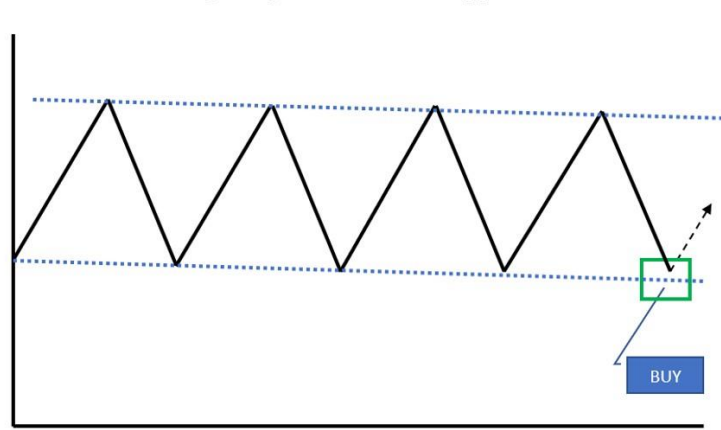
3. **Downtrend intact**, recent rally is a selling opportunity



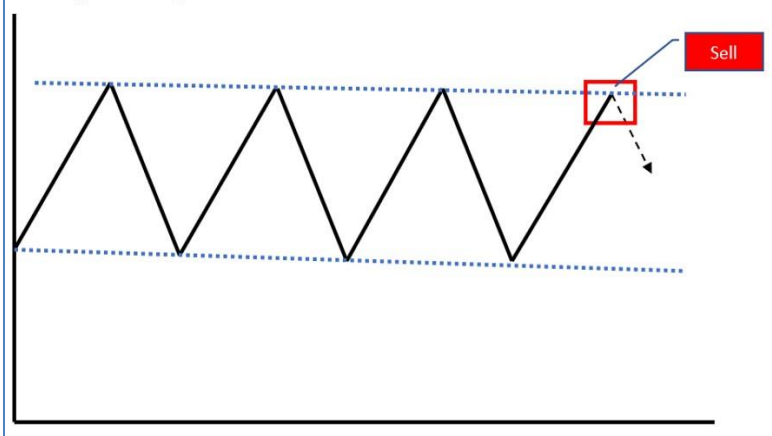
4. **Downtrend violation**, buy at new support



5. **Bottom of range**, buy at established support



6. **Top of range**, sell at established resistance



CLICK ON LINKS BELOW FOR TECHNICAL INDICATOR EXPLANATIONS:

[ASCENDING - DESCENDING TRIANGLE](#)
[BASING-TOPPING-CONSOLIDATION](#)
[BREAKOUT \(Breakdown\)](#)
[CHANNEL & RANGE](#)
[DIRECTIONAL MOVEMENT INDEX \(DMI\)](#)
[DOUBLE BOTTOM or DOUBLE TOP](#)
[MACD-MOVING AVERAGE CONVERGENCE-DIVERGENCE](#)
[MOVING AVERAGES](#)
[RELATIVE STRENGTH & PEER STOCK PERFORMANCE](#)
[REPEATING PATTERNS](#)
[RSI-RELATIVE_STRENGTH](#)
[SUPPORT, RESISTANCE, BREAKOUT, BREAKDOWN](#)
[TREND](#)

Visit TPA at <http://www.turningpointanalyticsllc.com/>

ALWAYS REMEMBER: No strategy exists in a vacuum – always evaluate the relevant sector & market.
Over 80% of portfolio performance is determined by sector and market forces (Ibbotson & Kaplan study – January/February 2000)

Turning Point Analytics Disclaimer

Turning Point Analytics (TPA) is only one of many tools that an investor should use to make a final investment decision. TPA is an overlay on top of a client's good fundamental or macro analysis. TPA does not create or provide fundamental analysis. The information in this communication may include technical analysis. Technical analysis is a discipline that studies the past trading history of a security while trying to forecast future price action. Technical analysis does not consider the underlying fundamentals of the security in question and it does not provide information reasonably sufficient upon which to base an investment decision. Investors should not rely on technical analysis alone while making an investment decision. Before making an investment decision, investors should consider reviewing all publicly available information regarding the security in question, including, but not limited to, the underlying fundamentals of the security and other information which is available in filings with the Securities and Exchange Commission. The information and analysis contained in reports provided by TPA are copyrighted and may not be duplicated or redistributed for any reason without the express written consent of TPA. The information in this communication is for institutional or sophisticated investors only. By accepting this communication, the recipient agrees not to forward, and/or copy the information to any other person, except as permitted, or required by law. TPA does not guarantee accuracy or completeness. TPA is a publisher of technical research and has no investment banking or advisory relationship with any company mentioned in any report. Reports are neither a solicitation to buy nor an offer to sell securities. Past performance is in no way indicative of future results. Opinions expressed are subject to change without notice. TPA will provide, upon request, the details of any past recommendations. TPA's analysis and recommendations should not be used as the sole reason to buy or sell any security. TPA may compensate brokers and intermediaries for sales and marketing services. You understand and acknowledge that there is a very high degree of risk involved in trading securities and/or currencies. The Company, the authors, the publisher, and all affiliates of Company assume no responsibility or liability for your trading and investment results. It should not be assumed that the methods, techniques, or indicators presented will be profitable or that they will not result in losses. Statements, data, and analysis made by TPA or in its publications, are made as of the date stated and are subject to change without notice. TPA and/or its officers and employees may, from time to time acquire, hold, or sell a position in the securities mentioned herein. Upon request, TPA will furnish specific information in this regard. TPA will not be held liable for losses caused by conditions and/or events that are beyond TPA's control including, but not limited to war, strikes, natural disasters, new government restrictions, market fluctuations, and communications disruptions.